

February 3, 2022 | 7:00 pm  
Metro MTB Meeting  
Virtual- Video Conference  
**6 Members in attendance**

### **Mission Statement**

*Metro Mountain Bikers is a non-profit, volunteer organization dedicated to safeguarding the future of mountain biking through the preservation and promotion of responsible off-road bicycling opportunities. Which includes the education, sponsoring events, trail construction, and trail maintenance.*

### **Board Members**

Chris Shay, Co-Chair  
Dan Kutz, Treasurer - **virtual**  
Melissa Clark, Secretary  
Isaac Olson – **virtual**  
Tom Hartman  
Lindsay Carlson

Eric Hackbarth – OCMB

**Attendance:** 25 in person + 3 Virtual

### **Minooka Update- Ron Stawicki**

Snow has melted, trails currently icy, be sure to have studs. Hoping to schedule 6 trail work days this year. May host another clean-up work day before the trails open, early spring, to get folks amped up for year. If we have enough time after our trail work days, we may look at adding a couple of new features.

Be sure to have a Waukesha County Parks pass. This year Waukesha County Parks is going by license plates and will ticket folks that come in after hours that don't have a pass.

Questions/ Comments:

- Request to bring back the old trail exit. Not everyone wants to go back up and do that new last bit of trail extension that was added last year.
- Can we add "an upper, upper powerline berms"? NICA does this for their trail races.

### **Event Updates: Melissa Clark**

Photo slide show presented, attached.

Hugh Jass New Fane Race Snow Grooming

Waukesha Janboree Fat Bike Demo: Great turn out. We had about 80-100 folks out to demo fat bikes. Some folks had never been to Minooka Park before!

Pleasant Valley Fat Bike Ride: Good turnout of about 30 riders. Fermentorium Brewing was there offering beer samples.

**Snow dog – Bryan Douglas**

We have the second snow dog! See attachment for photos #SnowDog2022

**Heritage Update – John Slawny**

Digital presentation presented, attached

We are excited to bring in machine groomed modern trails to the area! Last year's volunteer efforts have a combined value of over \$60,000! Metro is working on a RTC DNR grant asking for \$86,000 grant for further trail development and expansions. Opening of the flow trail is pending installation of signage. Official Opening Event will likely be in June or July to ensure trails will be dry and open. Trail work days cadence typically alternates Saturdays and Sunday.

2022's projects include the flow trail return line and bike park

Other future projects:

- Green line, "experiential features". 10' of armored climbed. Putting in skinny bridge.

**Milwaukee County update – Marty Weigel**

Oak Hill 4, built last year, will be finished this week. Typically trail work starts around April, figure 4 more trail work days.

Kegel-Alpha Trail: Kegel-Alpha 2.0 was essentially approved 2 years ago and trail work will begin this spring.

Reminder that all Milwaukee Co trails all need to be non-directional and multi-use trails.

**Other Updates:**

Third Space Brewing wants to do an event in the city. Reach out to Bryan Douglas on Facebook if you'd like to be involved in planning an event.

Metro is in need of a Volunteer Coordinator to track all our volunteer hours for the year.

We need Operational Directors for the Milwaukee Co Trails.

Meeting adjourned at 8:20pm

# Winter Metro Events



# Hugh Jass New Fane Grooming





# Waukesha Janboree Fat Bike Demo



# Waukesha Janboree Fat Bike Demo



# Pleasant Valley Fat Bike Ride



#SnowDog2022







Ozaukee County  
Mountain Bikers

# HEY FAT BIKERS!

Hope you're enjoying the trails this winter, it sure takes a lot of dedication from our volunteers! Since 2019 the grooming crew has spent;

- 300 + hours grooming
- 200 + hours transporting our equipment
- put 3000 + miles on their personal vehicles

It is clear that the best way to continue to improve the trails for you is to PURCHASE ANOTHER SNOWDOG!! This will allow us to;

- spend more time grooming = better trail conditions for you
- transport our equipment less = less damage on tools
- **GET THE TRAILS GROOMED SOONER!**

We know that you want to help us reach our goal this year - scan the QR code below to help the Metro MTB Groomers reach their goal!

#SNOWDOG!2022



## DONATION GOAL

29%

**DONATE**

Collected: \$1,765.00

Goal: \$6,000.00



# Thanks to our Sponsors





# Heritage Trails MTB Park

Update and  
2022 Priorities





# Vision

## MTB-Specific Trail System that Meets Growing Demand for Machine-Built / Progressive Trails

- 8+ Miles of Singletrack, Flow and Jump Lines
- The Region's Only **Bike Park**
- **Progressive Trails** with Advanced Level Features
- Built with **Grants, Donations, Sponsorships** and **County Partnership**

# Status

**3.5 mi Complete in 9 months**

- 1.7 mi Blue Singletrack
- 1.0 mi Novice Green
- 0.8 mi Flow (opening spring)



# Features

- 2 Wood Drops, 1 Rock Drop
- Hip Jump, Log Jump
- 3 Large Tabletops
- Lots of Rollers
- *Opening in Spring*





**Donated building supplies, heavy equipment operation and over 1000 volunteer hours, with a combined value over \$60,000**



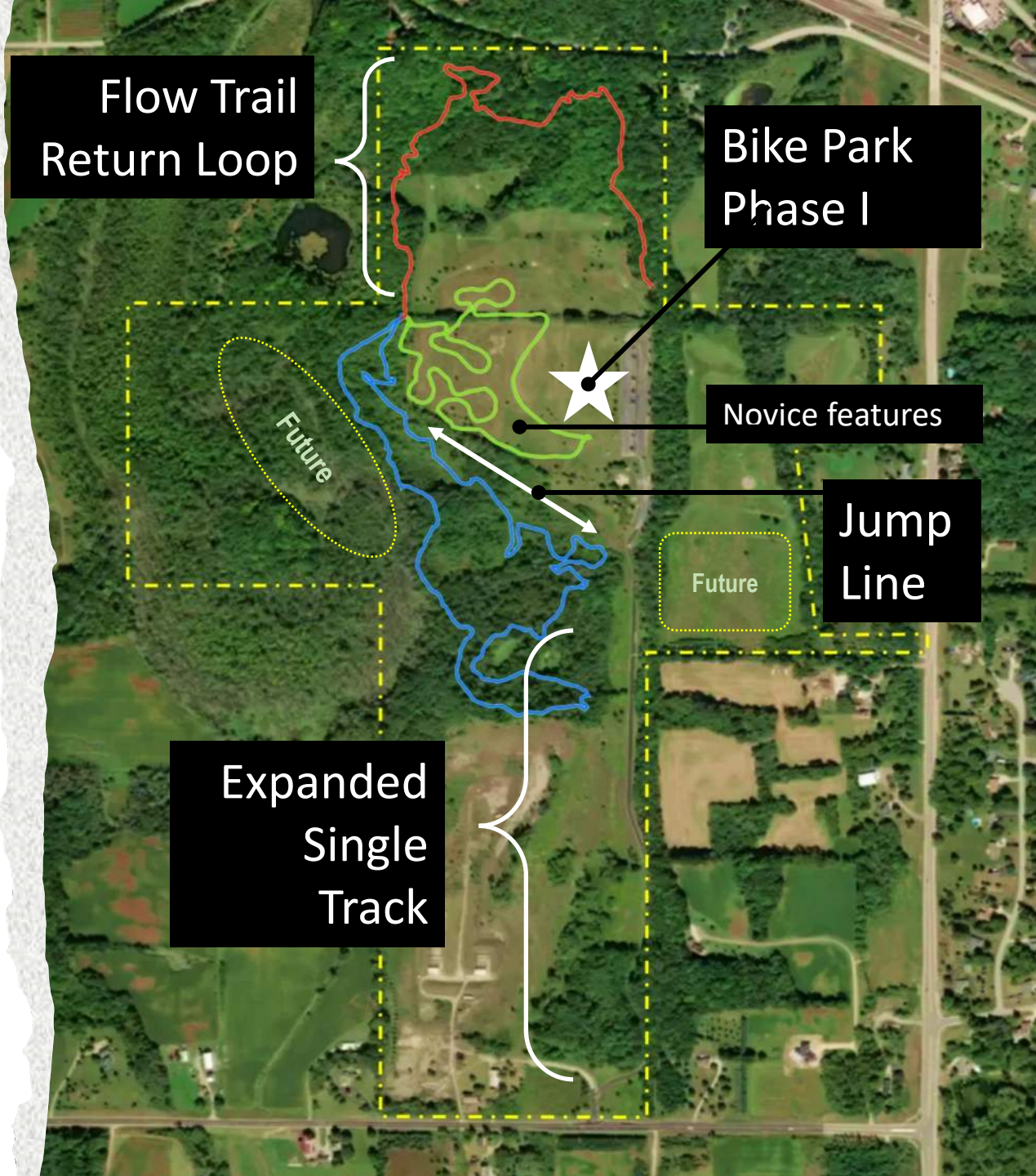
## **Excellent Partnership with Washington County**

- **County asked to increase 2-year contract to 5 years**
- **County writing RTC grant proposal (80/20 with \$100K cap)**
- **County providing funding dollars**
- **Allowing MMB sponsorship signage recognition**
- **Free Washington County publicity**



# 2022 Priorities

- Trail Markers & Safety Signs
- Bike Park Phase 1
- More Trail (4+mi)
- More Features
- Winter Route
- Funding



# Machine Built Trails

A yellow excavator is shown in a wooded area, actively digging a trail. The excavator's arm is extended, and its bucket is positioned to dig into the ground. The surrounding environment is filled with bare trees and brush, suggesting a late autumn or winter setting. The excavator's cab is visible, and the ground around it is disturbed, showing the progress of the trail construction.

*"I would say the sweet spot for high-quality, professional-built trail is in that \$50,000 to \$70,000 a mile range"*

Mike Repyak  
Planning & Design Director  
IMBA Trail Solutions

# Investment

- 2022: est. \$86,000  
(approx. \$20,000/mi)
- *Compare to current market rate cost of \$160,000*

# Funding

- Grants
- Annual sponsorships
- Donors
- Raffles
- Membership drive

# PRELIMINARY BUDGET

<u>Machine Build 4-5 miles of New Trail</u>	<u>Cost</u>
Blue Trail construction 2.5 miles. (50% discount)	\$36,000
Flow Trail 1+ miles (50% discount)	18,000
Jump Line 1+ miles (50% discount)	18,000
9 loads screened topsoil for jump line	2,700
Drop jump materials (2x6 treated lumber)	1,000
Erosion seeding mats	500
Grass Seed	500
Culvert Blue trail	175
Forestry brush cutter for access trail	600
<u>Bike Park Construction (6 jumps and 3 ladder drops)</u>	
Jump lumber, hardware and fabrication.	3,000
3 loads screened topsoil	900
<u>Green Trail (bridge, skinny, rollers)</u>	
Screened topsoil	300
Lumber for bridge feature	600
<u>Trail Signs</u>	
4 panel	680
>Sponsor/donor signs	600
<u>Petty cash for unforeseen minor expenditures</u>	<u>3,000</u>
	<b>\$86,555</b>

METRO MOUNTAIN BIKERS  
MILWAUKEE, WIS.

TRAIL WORK  
AHEAD

